

# Finding Out About Support Near You



You can find out what support there is near you by looking at the **Local Offer**. This is the name of a **web page** or written information, like a leaflet. It is written by your **local authority**, which might be called '**the council**'.

The Local Offer is for:



- **Disabled** children and young people
- Children and young people with **special educational needs**. Special educational needs are when you need extra help to learn things.
- **Families** of those children and young people



The Local Offer must give you **information** about the **support** that you should be able to get in your area.

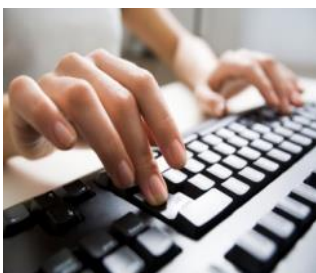
The Local Offer must have information about:



- **Schools, colleges** or training
- Special **health** support
- Hobbies or fun **activities**
- Support for becoming an **adult**
- **Transport**



The local authority must ask you what it should put in the Local Offer. You can tell your local authority **what you think** about it. They must show everyone what people have said and explain how they are going to **make it better**.



Your Local Offer is on your **local authority website**. If you cannot get on the website then they should give you **written information**, like a leaflet.



To find your Local Offer, go to: [Local Offer](#)

To find out more about the Local Offer, go to:

[www.youtube.com/user/WatchCDC](http://www.youtube.com/user/WatchCDC)



### **Information, Advice and Support Services**

can help you to find your Local Offer. They can also **help** you to tell your local authority what you think about your Local Offer.

**Ask** one of our members of staff for support.